

# GREEN SHEET



Virg Bernero, Mayor

Waste Reduction Services Newsletter

*The source for recycling, composting, refuse, and bulk item collection information and waste reduction education for Lansing residents.*

## IN THIS ISSUE

Compost It! .....	2
Rain Garden Update .....	2
What, When, Where, and How! Weekly Trash Pickup .....	3
What, When, Where, and How! Recyclables and Curbside Pickup .....	4
Holidays & Important Dates to Remember .....	5
Please DO NOT Rake Leaves Into Street .....	5
Special Recycling Announcements .....	6
Locals Honored for their Efforts to Reduce, Reuse and Recycle .....	6
Wheels Help Get Recycling Bins to the Curbside .....	6
Have Your Changed Your Lightbulbs Yet? .....	7
It's Not Too Late To Save Our Planet .....	7
Happy Birthday Blue Billy! .....	8
City Collection Days .....	8

## Lansing is a Leader in Recycling!

In May, the Michigan Recycling Coalition awarded The City of Lansing's Waste Reduction Services with two "Recycler of the Year" awards.

One for Outstanding Composting program for the school food waste composting initiative, a partnership between the City of Lansing, the Lansing School District and East Lansing based non-profit, Urban Options. Through this program, children are involved with feeding their lunch leftovers to worms that live in a giant worm bin located in the school yards of four elementary schools. The worms turn the food waste into nutrient-rich compost that is used in school gardens to fertilize the soil.



The second award is for Outstanding Special Event recycling for our efforts to recycle and reduce waste at the Common Ground Music Festival.

Forty-five percent of the waste from the event was recycled, thanks to the efforts of local scouts who collected PET bottles and aluminum cans and vendors and event organizers who helped recover corrugated cardboard. Plans are being made to work with vendors to further reduce the amount of trash generated at the event next year.

We are proud to have been recognized by a statewide recycling organization and will continue to work hard to increase recycling in Lansing. We appreciate the support and hard work of everyone involved with these programs.

### About the Michigan Recycling Coalition:

The Michigan Recycling Coalition (MRC) is a non-profit environmental organization whose mission is:

To foster effective resource use in Michigan by developing, supporting and educating a coalition of business, government, non-profit and individual members working toward the common goals of waste reduction, recycling, reuse, composting and recycled-content purchasing.

To find out more about the MRC or to join the organization, visit the website at [www.michiganrecycles.com](http://www.michiganrecycles.com)

### Keep up the good work Lansing!

*A recent survey indicates that 70% of Lansing residents participate in the curbside recycling program. Compared to a national average of 58%, we are leading the pack!*

## Compost It!

Fall will be here soon and that means leaves, leaves, leaves! In 2006 the City of Lansing collected 23,000 cubic yards of leaves and other yard waste materials. We are happy to provide this service to our residents who are not able to compost on their own. But, more and more residents are discovering how easy it is to take care of their own yard waste by composting and mulching.



It takes money, fuel, energy and other resources to provide the yard waste collection service.

Some of this can be offset by more Lansing residents composting in their own backyard. It's fun, it's easy and almost any gardener will tell you that it's extremely beneficial. Compost provides nutrients for flower beds and vegetable gardens, can be used as a lawn amendment, makes a good material for mulch and more.

Composting, the process of organic materials decomposing into a nutrient-rich material called humus, can be easily done on an average city lot. Whether you have a small flower patch, a vegetable garden or if your whole yard is your garden, you stand to benefit from making and using your own compost.

There are many good online resources to help you start and maintain a compost pile. Check out the links below or contact us at 483-4400 or [recycle@ci.lansing.mi.us](mailto:recycle@ci.lansing.mi.us) for a free composting information packet.

U.S. EPA

[http://www.epa.gov/compost/by\\_compost.htm](http://www.epa.gov/compost/by_compost.htm)

Earth 911

[http://www.earth911.org/master.asp?s=lib&a=organics/composting/joy/comp\\_backyard.inc](http://www.earth911.org/master.asp?s=lib&a=organics/composting/joy/comp_backyard.inc)

State of Michigan, Dept. of Environmental Quality's Home Composting Brochure

[www.deq.state.mi.us/documents/deq-wmd-swp-compostbroch.pdf](http://www.deq.state.mi.us/documents/deq-wmd-swp-compostbroch.pdf)

## Rain Garden Update

Lansing's beautiful riverfront is among our most prized assets. To ensure the protection of our rivers, in 1992 the City of Lansing began a 30-year project of separating its 203 miles of combined storm water and sewage pipes. In addition to separating storm water from raw sewage pipes, the City of Lansing is now taking further steps to protect our rivers from harmful sediments and pollutants.

You may have heard about the rain gardens being installed along Michigan Avenue. Construction of the rain gardens is being completed in conjunction with sewer separation work and will also provide streetscape beautification elements such as brick pavers, benches, and kiosks. Interpretive educational signage will be posted in the gardens, which will inform anyone who may be interested in this innovative urban solution to storm water pollution.

The Michigan Avenue rain gardens will be much more than beautiful; they are actually engineered bio-retention areas designed to help remove pollutants from storm water before it is released to the river.

Storm water easily picks up contaminants

such as sediment, automotive fluids, fertilizer, and debris as it travels over streets and sidewalks. This polluted runoff typically enters the storm sewer system, which drains directly into our rivers without treatment.

Thanks to the new rain gardens, storm water on Michigan Avenue will now be treated by native plants and engineered soils which will absorb the pollutants. The treated storm water that is not absorbed by the plants will then be discharged into the river through a drain that runs underneath the gardens.

As fascinating and effective as these rain gardens are, all of us can easily help prevent storm water pollution. Here are three easy ways: 1) never dump anything down a storm drain; 2) never fertilize before it rains; and 3) wash your car at a commercial car wash or on your lawn. Remember, only rain belongs in the storm drain!



# What, When, Why and How

Place all items at the curb by 7 a.m. on collection day. All containers must be off the curb by 7 p.m. Bags, bins, or bundles must not exceed 30 lbs. and must be visible from the street. Separate recyclable materials and yard waste from trash.

Visit us on the Web! [www.lansingrecycles.com](http://www.lansingrecycles.com)

WRS Hotline: 517/483-4400 Email: [recycle@ci.lansing.mi.us](mailto:recycle@ci.lansing.mi.us)

## Weekly Trash Pick Up

**Call 483-4400 to get signed up today!**

The City of Lansing has provided trash collection services for over 90 years, making us the leader in convenient curbside pickup. You can count on our affordable weekly collections. Our range of services and multiple cart sizes are sure to meet the needs of any size household.

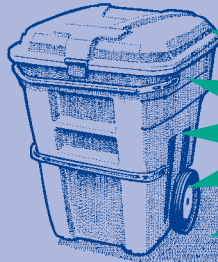
*NO Hazardous waste, gasoline, or other explosive materials, and no wet paint, herbicides, pesticides, hot ash or coals. Cardboard can be picked up with trash if flattened and bundled, then placed next to city trash carts or bags. Please double bag animal waste and diapers.*

**NEW LOWER RATES!**



### Blue City Trash Bags

Blue bags are available at many local grocery and convenience stores. The cost is \$8.75 for a package of five 30 gallon bags (prices subject to change).



**NEW LOWER RATES!**

### Blue Billy Trash Carts

These convenient and strong roll-out carts are for trash only. All trash in the carts must be bagged. Bagging trash will help keep carts clean and minimize odors. Select the size of Blue Billy cart which suits your needs: Billed quarterly, pre-paid service

32-gal. cart= \$38.00 for 3 months

65-gal. cart= \$43.00 for 3 months

95-gal. cart= \$49.00 for 3 months

(allowed up to 3 extra bags on side of 95 gallon cart)

Prices are subject to change

Front door pickup is available. Please call 483-4400 for details.

#### Payment options:

Pay with Visa, MasterCard, Discover or American Express by calling 483-4400

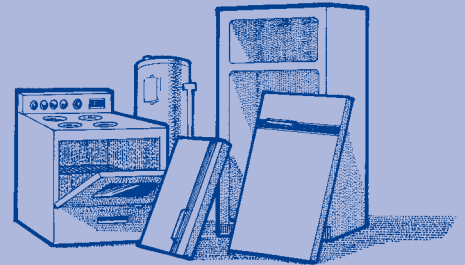
Send checks or money orders to: City of Lansing, WRS, 601 E. South Street, Lansing, MI 48910, or,

Pay in person at: 601 E. South Street (NO cash accepted)

A drop box is available for after hours payments

*(see map on back page for directions)*

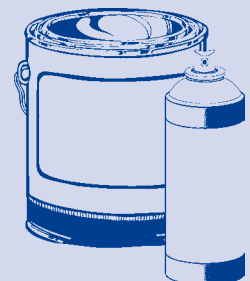
Choose either Blue Billy Trash Cart or Blue City Trash Bags. See details below.



### Bulk Trash Items

Large items over 30 lbs. and longer than 4 feet such as appliances or furniture, require bulk collection sticker. Stickers are available at courtesy desks of many local grocery stores for \$33.00 per sticker (prices subject to change). Call the WRS Hotline at 483-4400 for a list of stores selling bulk-item stickers. Each individual item must be tagged. NOTE: Refrigerator and freezer doors MUST be removed. Free bulk stickers are available to low income residents. Call 483-4400 for details.

The Ingham County Health Department collects household hazardous waste, such as pesticides, chemicals and oil-based paints. Collections will be held every Thursday from 2 p.m. until 6 p.m. through the end of September. Please call 887-4312 for more information.



# What, When, Why and How

## Recyclables: Curbside & Drop-Off

### CURBSIDE

#### Glass

Clear and brown food jars and beverage bottles. Rinse clean and remove lids. (Put lids with cans). No drinking glasses, Pyrex, window panes, dishes, or light bulbs.



#### Metal

Steel (tin) cans and aluminum cans, trays, and clean foil. Rinse clean. Remove top and bottom if possible. **PLEASE FLATTEN.** No Gasoline, aerosol or paint cans, wire, or scrap metal.



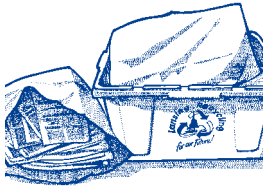
#### Plastic Bottles and Jugs

HDPE #2 or PET #1 stamped on bottom. Only bottles or jugs with threaded neck. HDPE #2 must have a seam on the bottom and sides. Clear and green PET #1 containers only. Rinse clean, remove and discard cap. Please flatten. No used motor oil jugs, wide mouth containers, food tubs (butter, sour cream, cottage cheese, etc.), plastic bags or #7/compatible with #2. Clear and green transparent bottles only.



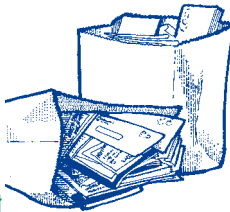
#### Newspaper (Including Inserts)

Place in brown paper grocery bag or stack and bundle with string or twine. Place newspapers beside or inside green bins. **Please place mixed papers and junk mail in separate paper bag.**



#### Magazines, Mixed paper & Junk Mail

Includes almost anything that comes inside a mailbox, such as junk mail, flyers, plain or windowed envelopes, office paper, letterhead, magazines, catalogs, colored paper, stationery and shredded paper. Must be in brown paper grocery bag or bundled with string or twine. No cardboard, boxboard, telephone books or plastic of any kind. **Please place newspapers in separate paper bag.**



Place all items at the curb by 7 a.m. on collection day. Containers must be off the curb by 7 p.m. Bags, bins, or bundles must not exceed 30 lbs. and must be visible from the street. Separate recyclable materials and yard waste from trash. Recyclables must be set out with green recycling bin. Place bin to the left of any obstruction (trees, carts, etc.)

### YARD WASTE

#### Yard Clippings (Seasonal Collection)

Place leaves, grass clippings, or garden wastes in paper bags. Do not use City of Lansing trash bags, blue carts, rigid containers or private waste hauler carts for yard clippings. Brush and tree trimmings must be less than 4 feet in length and less than 2 inches in diameter. Bundle securely with string or twine, or place in paper bags. NO wire. Paper lawn care bags are available at many local grocery and convenience stores.

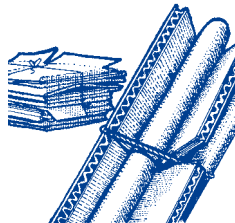


### DROP-OFF

Location: 530 E. South Street at the corner of South and Beech Streets. Follow S. Washington Ave. to South St., which is located just north of the railroad tracks. (**South St. runs UNDER the Cedar St. viaduct.**) Hours: 24 hours a day, seven days a week.

#### Corrugated Cardboard

Corrugated cardboard is a two-layer cardboard with a wavy middle layer. Please break down all boxes before placing in the cardboard collection bin. **Drop-off only! Cardboard will not be recycled if placed curbside. Do not place in green recycling bins.**



#### Magazines, Mixed paper & Junk Mail

Includes almost anything that comes inside a mail-box, such as: junk mail, flyers, envelopes (windows okay), office paper, letterhead, magazines, catalogs, colored paper, stationery and shredded paper.



#### Telephone Books

Any type of old phone book accepted. No plastic, catalogs or other books. **Not recycled curbside, Drop-off only!**



**Batteries and cell phones recycled in WRS Office, 601 E. South St., 2nd Floor. M-F, 8-4**



#### Athletic Shoes

Athletic shoes only (all brands accepted). No metal, cleats or spikes. No dress shoes, sandals, boots or other types of shoes will be accepted. As part of Nike's Reuse-A-Shoe program, this is an on-going collection with many drop-off locations throughout the tri-county area. Call 483-4400 or visit [www.lansingrecycles.com](http://www.lansingrecycles.com) to find other sites near you.



Visit us on the Web!  
[www.lansingrecycles.com](http://www.lansingrecycles.com)

WRS Hotline: 517/483-4400 [recycle@ci.lansing.mi.us](mailto:recycle@ci.lansing.mi.us)

# Holidays and Important Dates to Remember

Collection for city observed holidays and the rest of the week following the holiday will be delayed by one day. Friday collections will take place on Saturday. For more information, call the Waste Reduction Services Hotline at 483-4400.

## September

- 3 Labor Day. Office closed. Collections the week of September 5th will be delayed by one day.
- 15 Books & boxboard collection. See page 6 for details.
- 29 Computer & Electronics Recycling Collection. See page 6 for details.

## October

Normal Service Schedule

## November

- 11 Veterans Day. Office closed on Monday, November 12th. Collections will be delayed the week of the 12th.
- 22 Thanksgiving. Office closed on 22nd and 23rd. Collections on Thursday and Friday will be delayed by one day.
- 26 Seasonal yard waste collection ends the week of November 26th.

## December

- 25 Christmas Day. Office closed on 25th and 26th.

Collections on the 25th and the rest of the week following will be delayed by one day.

- 31 New Year's Eve. Office closed on Monday, December 31st. Collections the week of the 31st will be delayed by one day.
- 31 Holiday Tree collection begins the week of December 31st.

## January

- 1 New Year's Day. Office closed on the 1st. Collections on the 1st and the rest of the week following will be delayed by one day.
- 15 Martin Luther King Jr. Day. Office closed on the 15th. Collections on the 15th and the rest of the week following will be delayed by one day.

## February

Normal Service Schedule

## March

- 13-16 Lansing Home & Garden Show. Visit our booth for free information and giveaways.

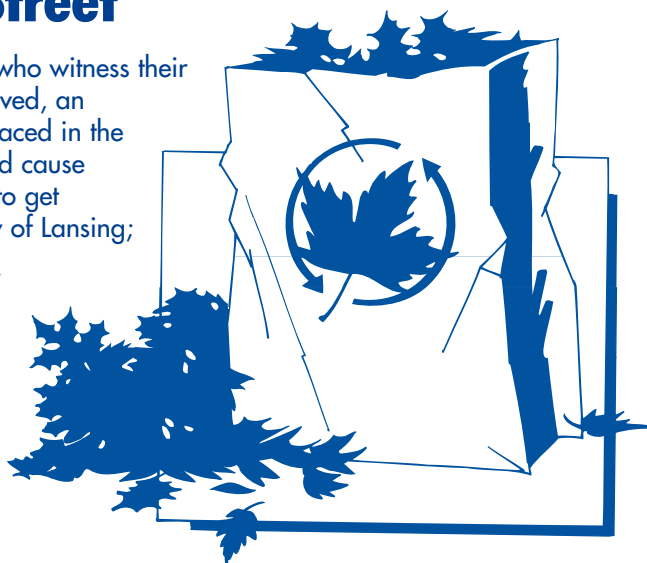
**The seasonal yard waste collection will end the week of November 26, 2007. The Holiday tree collection will begin the week of December 31, 2007 and continue through the week of January 7, 2008.**

## Please DO NOT Rake Leaves Into Street

Every year the Public Service Department receives calls from residents who witness their neighbors raking leaves into the streets. Each time a complaint is received, an enforcement worker must respond to the situation. When leaves are placed in the street, it can create hazardous driving conditions, plug catch basins and cause flooding or worse, children hiding in piles of leaves have been known to get injured when cars drive over piles and drivers can't see them. The City of Lansing;

### **DOES NOT ALLOW LEAVES TO BE RAKED INTO STREETS**

The City of Lansing provides a convenient, weekly collection of leaves and other yard waste materials. Residents are required to bag them using paper yard waste bags. There is no limit to the amount of bags that can be placed at the curb for pickup, provided that all bags are about 30 pounds or less. So please handle your leaves responsibility by using the City's convenient curbside pickup, your neighbors will appreciate it.



# Special Recycling Announcements

## Clean Up, Clear Out and Recycle!

### Free Recycling Event for Books & More

**Date:** Saturday, September 15, 2007  
**Time:** 8am -12 noon  
**Location:** Ingham County Road Commission, 5613 S. Aurelius Rd. (between Jolly and Miller)

**Items accepted:** Hard cover and soft cover books, magazines, telephone books, boxboard (cereal boxes, shoe boxes, etc.)



### Special Recycling Collection for Computers & Electronics

**Date:** Saturday, September 29, 2007  
**Time:** 8am-12 noon  
**Location:** City of Lansing, Recycling Transfer Station, 530 E. South St. (Directions from S. Washington Ave: Turn East on South St., just North of the RR tracks. The Transfer Station is at the corner of South and Beech Streets)

#### Material and Fee List:

Telephones, cell phones, laptops and small items such as coffee makers, vacuum cleaners and toasters = No Charge  
Stereo w/speakers = \$4.00  
Stereo w/o speakers = \$2.00  
PC computer w/ keyboard & mouse = \$5.00  
Console TV's = \$15.00

Non-console TV's = \$8.00  
Large Projection TV's = \$20.00  
Microwave Ovens = \$8.00  
VCR's, printers, scanners = \$2.00  
Personal copy machines = \$5.00  
Large copy machines = \$40.00  
Monitors <19" = \$5.00

*Residents are responsible for removing data from hard drives and other media storage devices*



### Locals Honored for their Efforts to Reduce, Reuse and Recycle

On Friday, April 13, 2007, the Tri-County Waste Reduction Awards Program (WRAP) celebrated its fifth anniversary with an awards ceremony held at the Cadillac Club in Lansing. Six local individuals and businesses were honored for their outstanding efforts to recycle and reduce their waste.



To date, 52 local businesses, non-profit organizations, schools, government offices and individuals have been honored for their exemplary pollution prevention practices. 2007 winners are listed below:

- Kevin Green**, Principal Shopping District, Ingham County
- Dr. Lisa Knowles**, Knowles Dentistry, Eaton County
- Green River Café**, Ingham County
- Tiffany Johnson**, Clinton County
- Insty Prints Downtown**, Ingham County
- Greater Laingsburg Recyclers**, Clinton County

The WRAP program is in search of businesses and individuals who go out of their way to reduce, reuse and recycle. If you would like to nominate yourself or someone else, please contact WRS at 483-4599 or [recycle@ci.lansing.mi.us](mailto:recycle@ci.lansing.mi.us).

### Wheels Help Get Recycling Bins to the Curbside

Recycling bins on wheels are available to the elderly or to those with physical conditions that make it difficult to get the bin to the curb for pickup. Please contact WRS at 483-4400 or email [recycle@ci.lansing.mi.us](mailto:recycle@ci.lansing.mi.us) for more information about how you can obtain a wheeled bin.



# Have You Changed Your Lightbulbs Yet?

If you haven't already converted the lights in your home from traditional incandescent bulbs to Compact Fluorescents (CFL), you may want to after reading this. Consider the following benefits:

- CFLs are four times more efficient and last up to 10 times longer than incandescents, even though CFL's cost a bit more at first, you save money in the long run.
- Replacing a single incandescent bulb with a CFL will keep a half-ton of CO<sub>2</sub> out of the atmosphere over the life of the bulb, thereby reducing pollution.
- According to the U.S. EPA, if every home in America replaced just one incandescent light bulb with an Energy Star CFL, it would save enough energy to light more than 3 million homes and prevent greenhouse gas emissions equivalent to those of more than 800,000 cars annually.

When your CFL finally burns out, please dispose of it responsibly by taking it to Ingham County's household hazardous waste collections.

CFL's contain a small amount of mercury, about 5 milligrams,



roughly the size of the tip of a ball-point pen, therefore the US EPA recommends taking it to a local household hazardous waste collection.

**In Ingham County, these collections take place each Thursday, from 2-6pm at the Ingham County Health Dept. at the corner of Cedar and Jolly, from April – September. Please call 887-4312 for more information.**

# It's Not Too Late To Save Our Planet

According to the Pew Center on Global Climate Change, the scientific community has reached a strong consensus regarding the science of global climate change. The world is undoubtedly warming. This warming is largely the result of emissions of carbon dioxide and other greenhouse gases from human activities. You have likely heard of the possible outcomes from a warmer climate: rising sea levels, more severe floods, stronger storms, droughts, threats to biodiversity, and a number of potential challenges for public health. On a local level, Michigan has already experienced some changes. Did you know that the growing season has changed from region 5 to region 6, which is similar to the climate in Kentucky? In the future, we can expect warmer summers, dryer weather overall, strong storms and warmer winters.

We can change our behavior and make better choices, there's still time to improve the conditions on the planet, but most experts agree that it's critical to take action now. Listed below are some things that the average citizen can do to reduce greenhouse gas emissions, thereby reducing their impact on global warming.

- **Lower Your thermostat** – 350 pounds of greenhouse gases are eliminated by lowering the thermostat 2 degrees in winter.
- **Change your lightbulbs:** A Compact Fluorescent Lightbulb uses 23 watts compared to a 100 watt traditional bulb with the same light.

- **Recycle** - Recycling helps to reduce our impact on global warming by reducing energy in the manufacturing, extraction, refinement and transportation processes involved in acquiring resources used in the creation of goods.
- **Heat and Cool your home more efficiently**  
Clean air filters regularly, install good insulation and have your furnace and air conditioner "tuned up" annually.





PRSR STD  
U.S. POSTAGE  
PAID  
Lansing, MI  
Permit No. 890

Public Service Department  
Operations and Maintenance Division  
Solid Waste Reduction Services

601 East South Street  
Lansing, Michigan 48910

**WRS HOTLINE**  
**517/483-4400**

Find us at our web site: [www.lansingrecycles.com](http://www.lansingrecycles.com)  
or email us at: [recycle@ci.lansing.mi.us](mailto:recycle@ci.lansing.mi.us)

## To Our Friends At:

## Happy Birthday Blue Billy!

The Blue Billy Trash Cart Program Is Now Ten Years Old! To Celebrate, We're Offering NEW LOW RATES For Curbside Trash Pickup! Blue Billy Trash carts are available in the following sizes to meet every need:

**32 gallon** (holds 2-3 kitchen sized bags) = \$38.00/3 months

**65 gallon** (holds 4-5 kitchen sized bags) = \$43.00/3 months

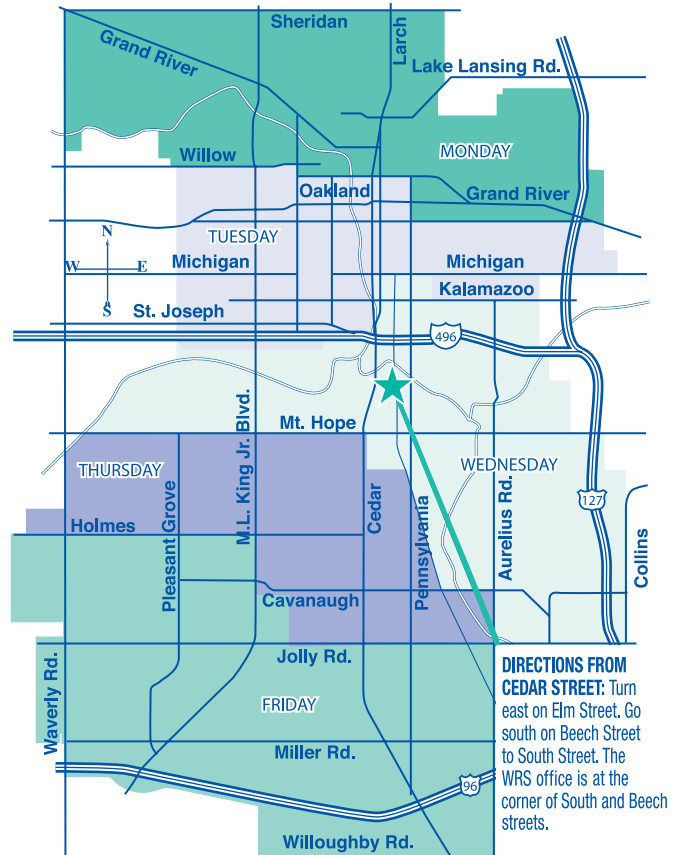
**95 gallon** (holds 6-8 kitchen sized bags, plus an extra 3 bags accepted on side of cart) = \$49.00/3 months

**OR CHOOSE BLUE CITY TRASH BAGS** (widely available in grocery and convenience stores): *City Bags are now only \$8.75 for a package of 5, 30 gallon bags!*



**Please recycle this newsletter with mixed paper!**

## CITY COLLECTION DAYS



Printed with soy-based ink on recycled paper